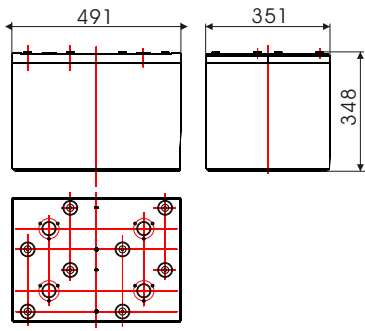


CNFJ-2000



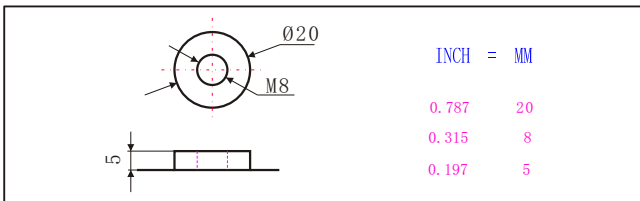
Specifications

Nominal Voltage		2V
Rated Capacity(10 hour rate)		2000AH
Dimension	Total Height (with terminals)	348mm(13. 58inches)
	Height	348mm(13. 58inches)
	Length	491mm(19. 33inches)
	Width	351mm(13. 82inches)
Weight		Approx.130kg(286. 34lbs)

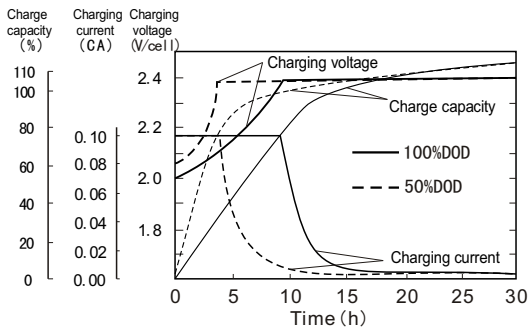
Characteristics

Capacity 77°F(25°C)	120 hour rate (20. 0A)	2400AH
	20 hour rate (110A)	2200AH
	10 hour rate (200A)	2000AH
Internal Resistance	Full charged Battery 77°F(25°C)	0.09mΩ
Self - Discharge 77°F(25°C)	Capacity after 3 month storage	95%
	Capacity after 6 month storage	85%
	Capacity after 12 month storage	80%
Max. Discharge Current 77°F(25°C)	20000A(5S)	
Terminal	Standard	F4
	Optional	
Charging (Constant Voltage)	Cycle	Initial Charging Current 600A or small 2.4V~2. 48V/77 °F(25°C)
	Float	2.25V~2.3V/77 °F(25°C)

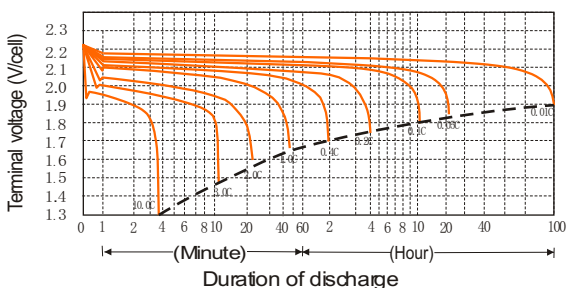
Terminal (F4)



Charge characteristics 77°F(25°C)



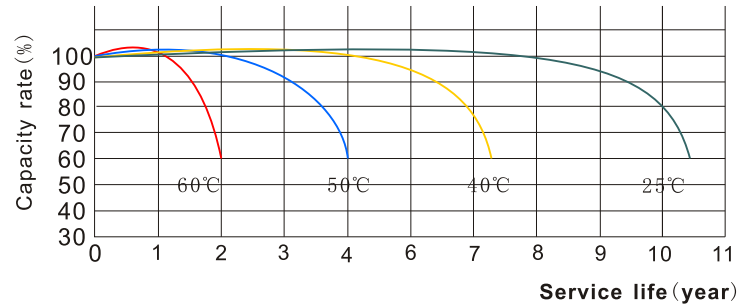
Discharge characteristics 77°F(25°C)



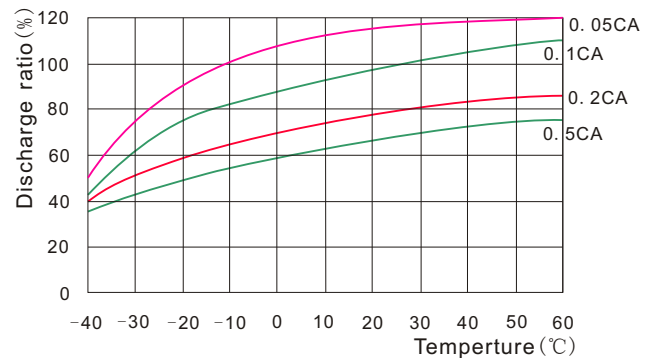
Discharge current and final discharge voltage

Discharge current (A)	Final discharge voltage (V/cell)
0.05C or below or intermittent discharge	1.9
0.05C of current close to it	1.85
0.1C of current close to it	1.8
0.2C of current close to it	1.75
From 0.2C to 0.5C	1.7
From 0.5C to 1C	1.6
From 1C to 3C	1.5
Current in excess of 3C	1.3

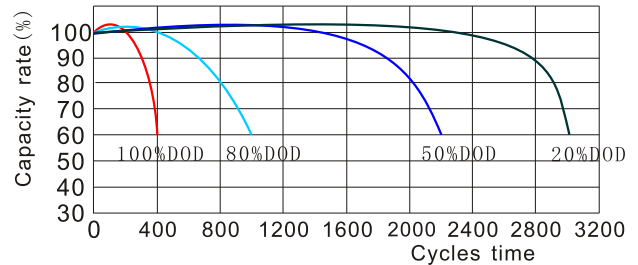
Temperature and float service life



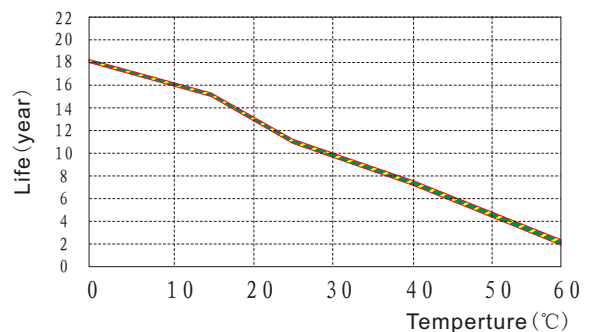
Temperature and discharge capacity



Cycle life curves (25°C)



Float service life



CNFJ-2000

Constant Current Discharge Characteristics Units: Amperes (25°C, 77°F)

End voltage per cell	5min	15min	30min	45min	1h	2h	3h	4h	5h	6h	8h	10h	12h	20h	24h
1.60V	5404	3448	2272	1710	1398	834	606	470	400	344	260	210	177	111	91.7
1.67V	4652	3126	2106	1620	1334	796	576	466	380	340	256	206	176	110	91.7
1.70V	4444	3030	2040	1600	1308	784	564	462	378	338	254	204	176	110	91.6
1.75V	4040	2836	1960	1538	1266	754	548	450	366	330	250	202	175	109	91.6
1.80V	3572	2598	1886	1482	1212	728	540	442	358	322	244	200	172	109	91.5
1.83V	3118	2374	1742	1378	1146	696	520	424	342	310	236	195	167	108	88.2
1.85V	2666	2150	1600	1274	1082	666	500	408	328	300	228	188	162	108	86.6

Discharge Data with Constant Power Units: Watts per cell (25°C, 77°F)

End voltage per cell	5min	15min	30min	45min	1h	2h	3h	4h	5h	6h	8h	10h	12h	20h	24h
1.60V	8962	6034	4130	3148	2608	1592	1160	902	768	674	510	414	348	216	191
1.67V	8006	5626	3866	3012	2540	1542	1132	898	744	666	500	406	348	216	191
1.70V	7748	5480	3760	2980	2468	1502	1086	892	730	662	498	402	347	215	190
1.75V	7152	5152	3636	2888	2400	1452	1060	878	712	652	488	398	346	215	188
1.80V	6484	4748	3512	2796	2310	1404	1048	862	694	642	480	394	338	214	186
1.83V	5726	4396	3280	2620	2194	1352	1012	834	670	624	464	384	330	213	176
1.85V	4968	4044	3048	2444	2080	1300	976	804	644	606	448	374	322	212	171