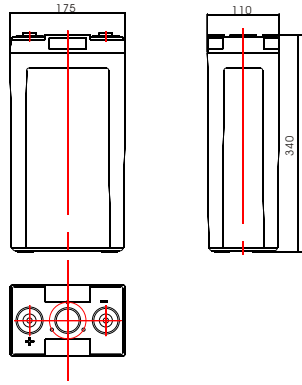


CNFJ-200



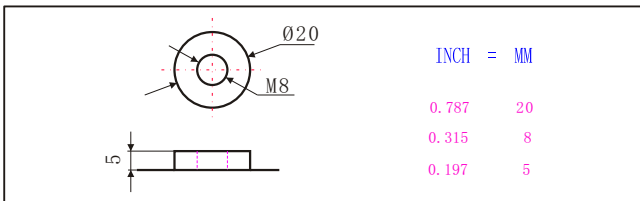
Specifications

Nominal Voltage		2V
Rated Capacity(10 hour rate)		200AH
Dimension	Total Height (with terminals)	340mm(13.39inches)
	Height	330mm(12.99inches)
	Length	175mm(6.89inches)
	Width	110mm(4.33inches)
Weight		Approx.15kg(33.04lbs)

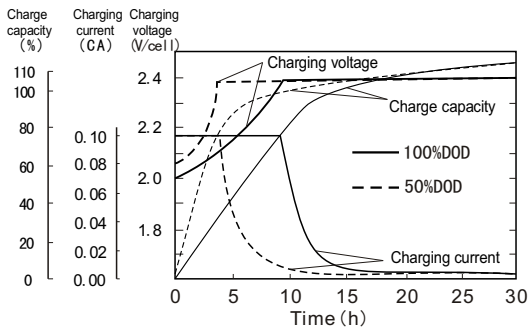
Characteristics

Capacity 77°F(25°C)	120 hour rate (2.0A)	240AH
	20 hour rate (22.0A)	220AH
	10 hour rate (20A)	200AH
Internal Resistance	Full charged Battery 77°F(25°C)	0.50mΩ
Self - Discharge 77°F(25°C)	Capacity after 3 month storage	95%
	Capacity after 6 month storage	85%
	Capacity after 12 month storage	80%
Max. Discharge Current 77°F(25°C)	2000A(5S)	
Terminal	Standard	F4
	Optional	
Charging (Constant Voltage)	Cycle	Initial Charging Current 60A or small 2.4V~2.48V/77°F(25°C)
	Float	2.25V~2.3V/77°F(25°C)

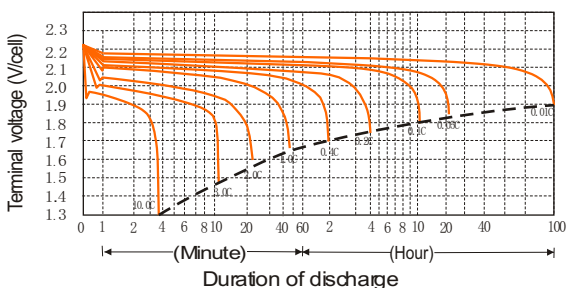
Terminal (F4)



Charge characteristics 77°F(25°C)



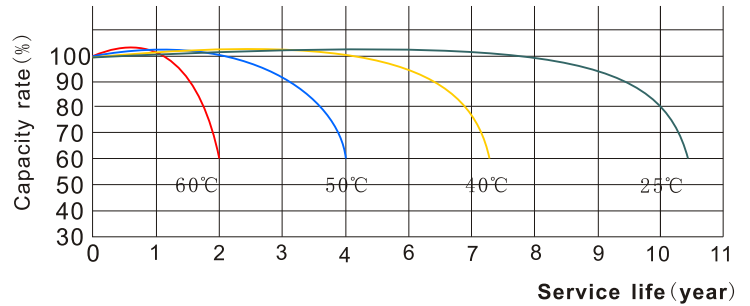
Discharge characteristics 77°F(25°C)



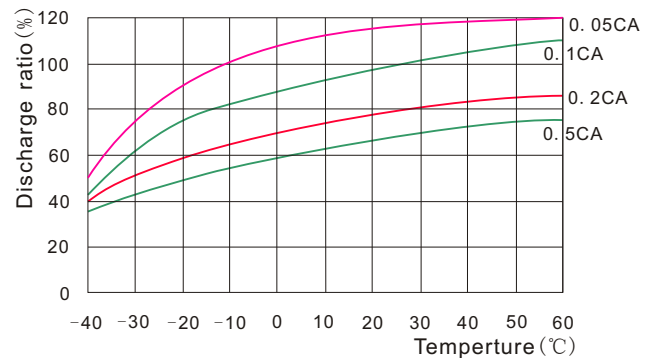
Discharge current and final discharge voltage

Discharge current (A)	Final discharge voltage (V/cell)
0.05C or below or intermittent discharge	1.9
0.05C of current close to it	1.85
0.1C of current close to it	1.8
0.2C of current close to it	1.75
From 0.2C to 0.5C	1.7
From 0.5C to 1C	1.6
From 1C to 3C	1.5
Current in excess of 3C	1.3

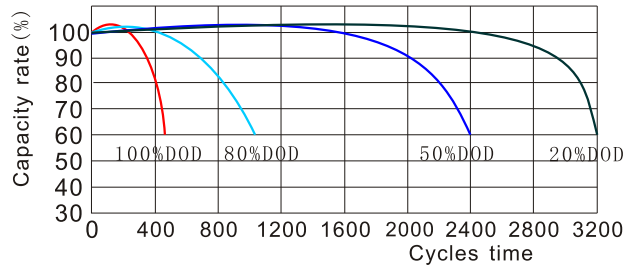
Temperature and float service life



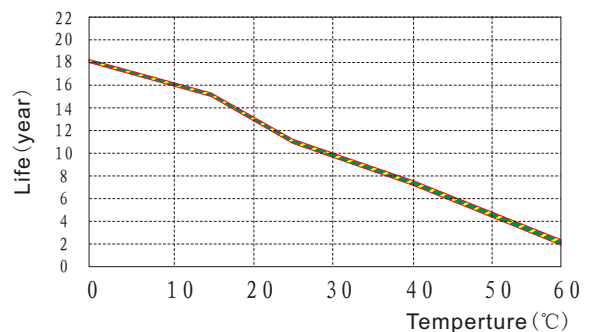
Temperature and discharge capacity



Cycle life curves (25°C)



Float service life



CNFJ-200

Constant Current Discharge Characteristics Units: Amperes (25°C, 77°F)

End voltage per cell	5min	15min	30min	45min	1h	2h	3h	4h	5h	6h	8h	10h	12h	20h	24h
1.60V	540	345	227	171	140	83.4	60.6	47.1	40.0	34.4	26.0	21.0	17.7	11.1	9.27
1.67V	465	313	211	162	135	79.6	57.6	46.6	38.0	34.0	25.6	20.6	17.7	11.1	9.27
1.70V	444	303	204	160	131	78.4	56.4	46.2	37.8	33.8	25.4	20.4	17.7	11.0	9.24
1.75V	404	284	196	154	127	75.4	54.8	45.0	36.6	33.0	25.0	20.2	17.5	11.0	9.22
1.80V	357	260	189	148	121	72.8	54.0	44.2	35.8	32.2	24.4	20.0	17.2	11.0	9.18
1.83V	312	237	174	138	115	69.6	52.0	42.4	34.2	31.0	23.6	19.4	16.7	11.0	8.92
1.85V	267	215	160	127	108	66.6	50.0	40.8	32.8	30.0	22.8	18.9	16.2	10.9	8.66

Discharge Data with Constant Power Units: Watts per cell (25°C, 77°F)

End voltage per cell	5min	15min	30min	45min	1h	2h	3h	4h	5h	6h	8h	10h	12h	20h	24h
1.60V	896	603	413	315	261	159	116	90.2	76.8	67.4	51.0	41.6	34.8	21.6	18.1
1.67V	801	563	387	301	254	154	113	89.8	74.4	66.6	50.0	40.6	34.8	21.6	18.1
1.70V	775	548	376	298	247	150	109	89.2	73.0	66.2	49.8	40.2	34.8	21.6	18.1
1.75V	715	515	364	289	240	145	106	87.8	71.2	65.2	48.8	39.8	34.8	21.6	18.1
1.80V	648	475	351	280	231	140	105	86.2	69.4	64.2	48.0	39.4	33.8	21.4	18.0
1.83V	573	440	328	262	219	135	101	83.4	67.0	62.4	46.4	38.4	33.0	21.4	17.6
1.85V	497	404	305	244	208	130	97.6	80.4	64.4	60.6	44.8	37.4	32.2	21.2	17.1