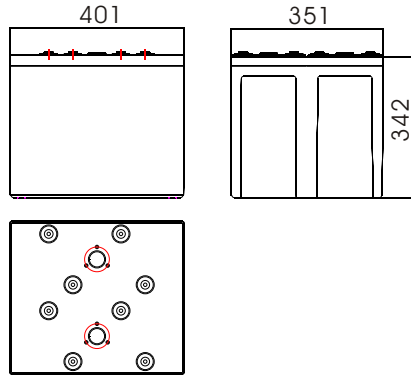


# CNFJ-1500



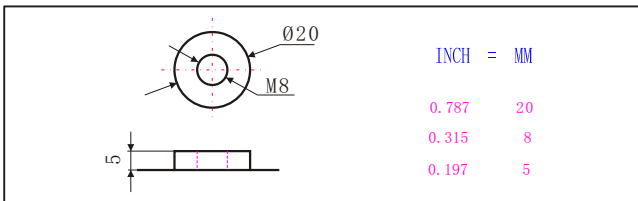
## Specifications

Nominal Voltage		2V
Rated Capacity(10 hour rate)		1500AH
Dimension	Total Height (with terminals)	347mm(13. 66inches)
	Height	342mm(13. 46inches)
	Length	401mm(15. 79inches)
	Width	351mm(13. 82inches)
Weight		Approx.100kg(220. 26lbs)

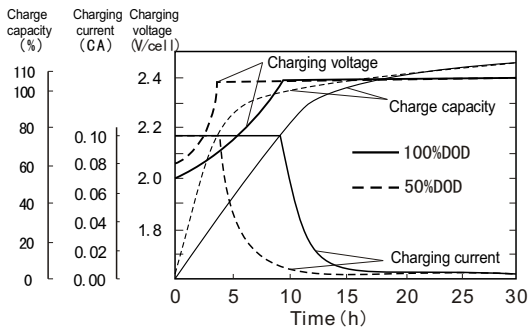
## Characteristics

Capacity 77°F(25°C)	1 hour rate (950A)	950AH		
	3 hour rate (135A)	405AH		
	10 hour rate (150A)	1500AH		
Internal Resistance	Full charged Battery 77°F(25°C)	0. 10mΩ		
Temperature Ranges	Operation(maximum):	-50°C to 60°C (-58°F to 140°F)		
	Operation(recommended):	15°C to 30°C (59°F to 86°F)		
	Storage:	-20°C to 40°C (-4°F to 104°F)		
Max. Discharge Current 77°F(25°C)	15000A(5S)			
Terminal	Standard	F4	Terminal Hardware Torque	15±1. 0Nm
	Optional		Container Material	ABS (V0 optional)
Charging (Constant Voltage)	Cycle	Initial Charging Current 450A or small 2.35V~2. 40V/77°F(25°C)		
	Float	2.25V~2.27V/77°F(25°C)		

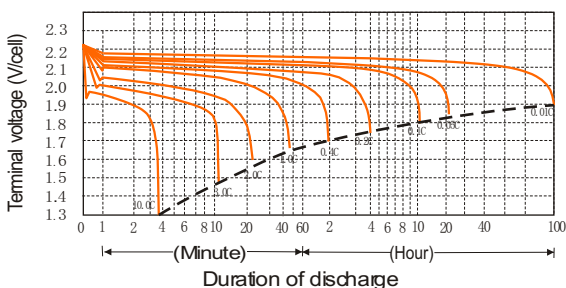
## Terminal (F4)



## Charge characteristics 77°F(25°C)



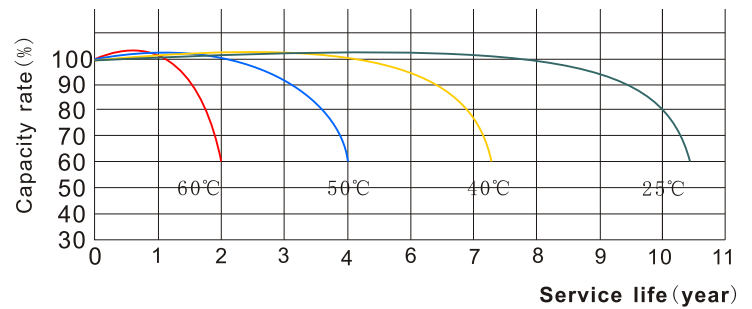
## Discharge characteristics 77°F(25°C)



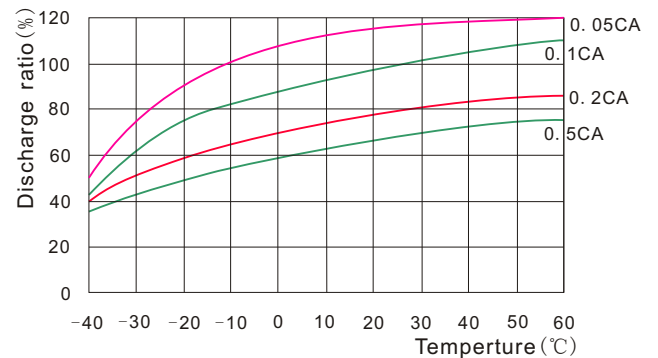
## Discharge current and final discharge voltage

Discharge current (A)	Final discharge voltage (V/cell)
0. 05C or below or intermittent discharge	1. 9
0. 05C of current close to it	1. 85
0. 1C of current close to it	1. 8
0. 2C of current close to it	1. 75
From 0. 2C to 0. 5C	1. 7
From 0. 5C to 1C	1. 6
From 1C to 3C	1. 5
Current in excess of 3C	1. 3

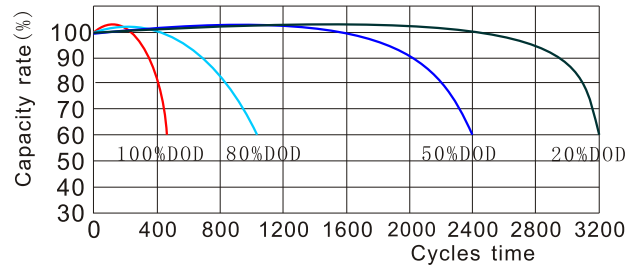
## Temperature and float service life



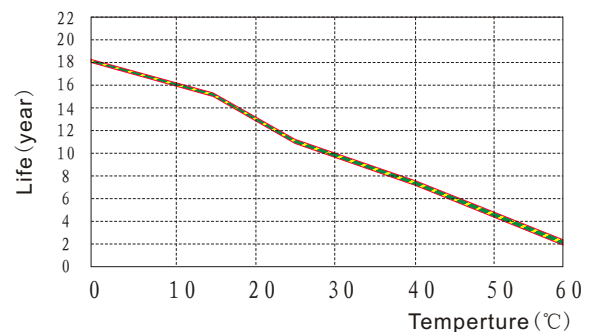
## Temperature and discharge capacity



## Cycle life curves (25°C)



## Float service life



# CNFJ-1500

## Constant Current Discharge Characteristics Units: Amperes (25°C, 77°F)

End voltage per cell	5min	15min	30min	45min	1h	2h	3h	4h	5h	6h	8h	10h	12h	20h	24h
1.60V	4054	2586	1704	1283	1049	626	455	353	300	258	195	158	133	83.0	69.5
1.67V	3489	2345	1580	1215	1016	597	432	350	285	255	192	155	133	83.0	69.5
1.70V	3333	2273	1530	1200	981	588	423	347	284	254	191	153	133	82.8	69.3
1.75V	3030	2127	1470	1154	950	566	411	338	275	248	188	152	132	82.8	69.2
1.80V	2679	1949	1415	1112	909	546	405	332	269	242	183	150	129	82.5	68.9
1.83V	2339	1781	1307	1033	860	522	390	318	257	233	177	146	125	82.2	66.9
1.85V	1999	1613	1200	956	812	500	375	306	246	225	171	141	122	82.1	65.0

## Discharge Data with Constant Power Units: Watts per cell (25°C, 77°F)

End voltage per cell	5min	15min	30min	45min	1h	2h	3h	4h	5h	6h	8h	10h	12h	20h	24h
1.60V	6721	4526	3097	2361	1956	1194	870	676	576	505	382	312	261	162	136
1.67V	6004	4220	2900	2259	1905	1157	849	673	558	499	375	304	261	162	136
1.70V	5811	4110	2820	2235	1851	1127	814	669	547	496	374	301	261	162	136
1.75V	5364	3864	2727	2166	1800	1089	795	658	534	489	366	298	261	162	136
1.80V	4863	3561	2634	2097	1732	1053	786	647	520	481	360	296	253	160	135
1.83V	4295	3297	2460	1965	1645	1014	759	625	502	468	348	288	247	160	132
1.85V	3726	3033	2286	1833	1560	975	732	603	483	454	336	281	241	159	129