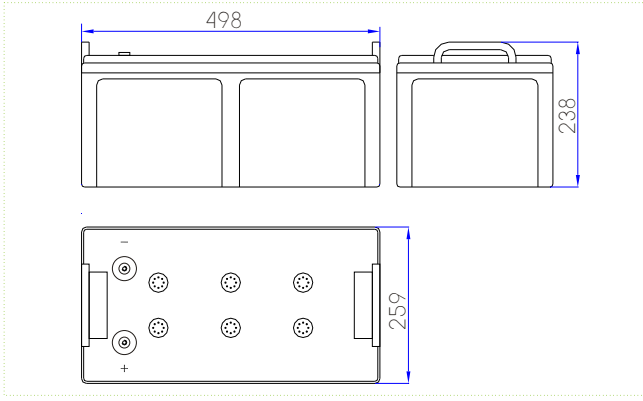


6-CNFT-200



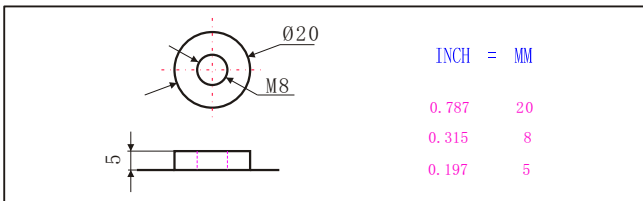
Specifications

Nominal Voltage		12V
Rated Capacity(10 hour rate)		200AH
Dimension	Total Height (with terminals)	238mm(9.37inches)
	Height	219mm(8.62inches)
	Length	498mm(19.61inches)
	Width	259mm(10.2inches)
Weight		Approx.65kg(143.17lbs)

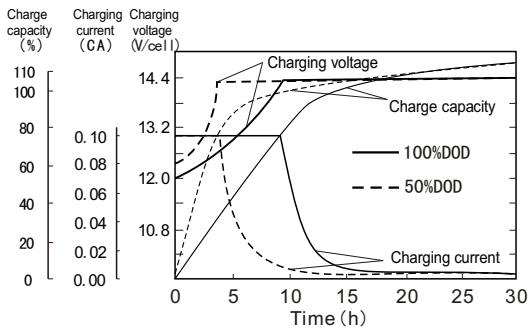
Characteristics

Capacity 77°F(25°C)	120 hour rate (2A)	240AH
	20 hour rate (11A)	220AH
	10 hour rate (20A)	200AH
Internal Resistance	Full charged Battery 77°F(25°C)	3.5mΩ
Self - Discharge 77°F(25°C)	Capacity after 3 month storage	95%
	Capacity after 6 month storage	85%
	Capacity after 12 month storage	80%
Max. Discharge Current 77°F(25°C)	2000A(5S)	
Terminal	Standard	F4
	Optional	
Charging (Constant Voltage)	Cycle	Initial Charging Current 60A or small 14.4V~14.8V/77°F(25°C)
	Float	13.5V~13.8V/77°F(25°C)

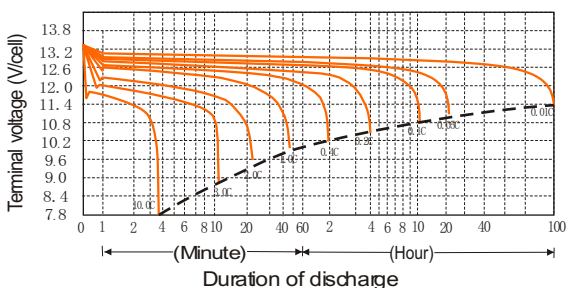
Terminal (F4)



Charge characteristics 77°F(25°C)



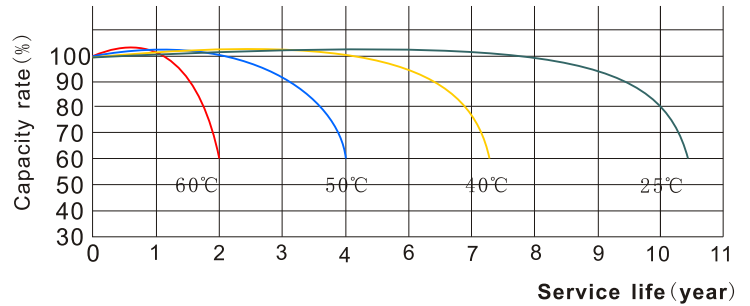
Discharge characteristics 77°F(25°C)



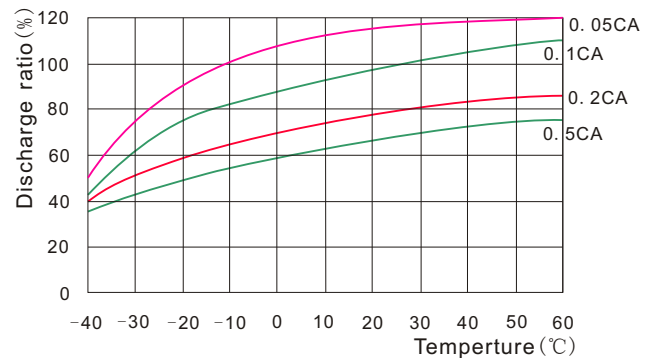
Discharge current and final discharge voltage

Discharge current (A)	Final discharge voltage (V/cell)
0.05C or below or intermittent discharge	11.4
0.05C of current close to it	11.1
0.1C of current close to it	10.8
0.2C of current close to it	10.5
From 0.2C to 0.5C	10.2
From 0.5C to 1C	9.6
From 1C to 3C	9.0
Current in excess of 3C	7.8

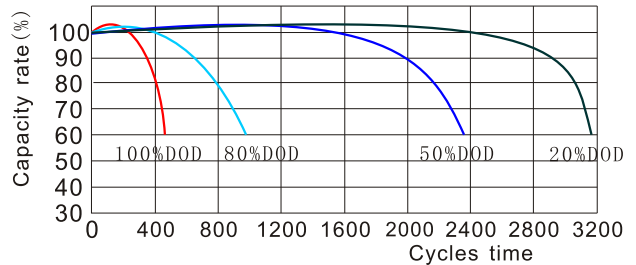
Temperature and float service life



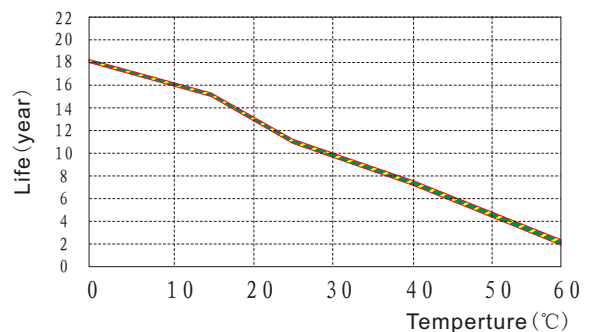
Temperature and discharge capacity



Cycle life curves (25°C)



Float service life



6-CNFT-200

Constant Current Discharge Characteristics Units: Amperes (25°C, 77°F)

End voltage per cell	5min	15min	30min	45min	1h	2h	3h	4h	5h	6h	8h	10h	12h	20h	24h
1.60V	681	365	224	161	126	73.5	57.3	45.0	38.4	32.6	24.9	20.7	17.4	11.3	9.24
1.67V	641	352	220	160	125	73.2	56.3	44.7	37.8	32.4	24.8	20.6	17.3	11.3	9.20
1.70V	636	346	217	158	124	72.4	56.0	44.5	37.2	32.0	24.7	20.5	17.3	11.2	9.19
1.75V	585	335	215	156	123	71.6	55.7	43.9	36.9	31.8	24.6	20.2	17.2	11.2	9.18
1.80V	528	312	207	152	121	71.0	55.5	43.8	36.4	31.4	24.5	20.0	17.1	10.8	9.16
1.83V	505	288	203	146	118	69.2	53.3	42.0	35.6	30.3	24.0	19.4	16.4	10.7	9.04
1.85V	475	280	188	140	113	66.7	51.9	41.4	34.7	29.3	23.7	19.1	16.2	10.6	8.96

Discharge Data with Constant Power Units: Watts per cell (25°C, 77°F)

End voltage per cell	5min	15min	30min	45min	1h	2h	3h	4h	5h	6h	8h	10h	12h	20h	24h
1.60V	1158	651	408	305	246	140	108	84.3	72.8	62.5	48.5	39.9	33.8	22.0	18.0
1.67V	1112	640	405	303	245	140	107	84.2	72.8	62.4	48.4	39.8	33.8	21.9	17.9
1.70V	1103	633	404	302	244	139	107	84.0	71.6	61.9	48.2	39.4	33.6	21.9	17.9
1.75V	1030	629	402	300	241	139	105	83.9	71.4	61.5	48.0	39.2	33.6	21.8	17.9
1.80V	953	596	396	295	240	138	105	83.7	70.9	61.4	47.8	39.0	33.3	21.0	17.8
1.83V	920	549	393	288	232	137	103	80.5	70.0	59.5	46.9	37.8	32.0	20.8	17.6
1.85V	862	538	368	278	225	134	100	79.6	68.0	58.2	45.0	37.4	31.5	20.6	17.5