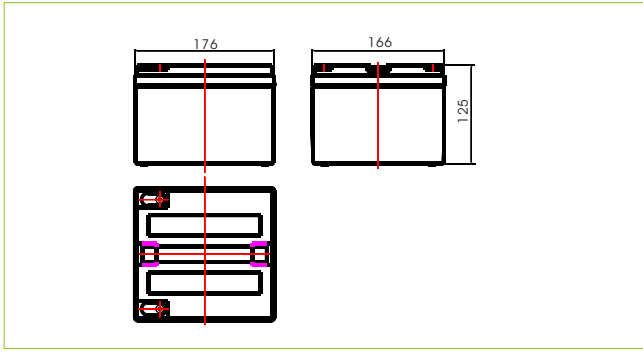


# 6-CNFJ-28



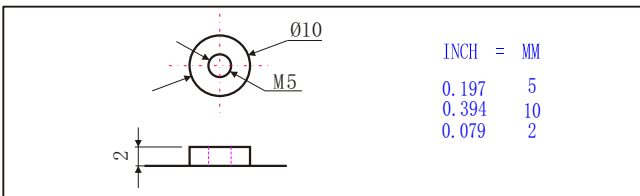
## Specifications

Nominal Voltage		12V
Rated Capacity(10 hour rate)		28AH
Dimension	Total Height (with terminals)	125mm(4.92inches)
	Height	125mm(4.92inches)
	Length	175mm(6.89inches)
	Width	166mm(6.54inches)
Weight		Approx.9.0kg(19.82lbs)

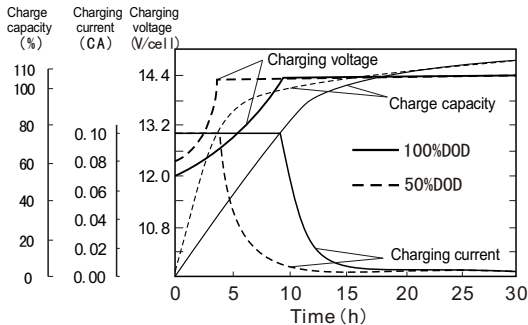
## Characteristics

Capacity 77°F(25°C)	120 hour rate (0.28A)	33.6AH
	20 hour rate (1.6A)	32AH
	10 hour rate (2.8A)	28AH
Internal Resistance	Full charged Battery 77°F(25°C)	8mΩ
Self - Discharge 77°F(25°C)	Capacity after 3 month storage	95%
	Capacity after 6 month storage	85%
	Capacity after 12 month storage	80%
Max. Discharge Current 77°F(25°C)		280A(5S)
Terminal	Standard	F5
	Optional	
Charging (Constant Voltage)	Cycle	Initial Charging Current 8.4A or small 14.4V~14.8V/77°F(25°C)
	Float	13.5V~13.8V/77°F(25°C)

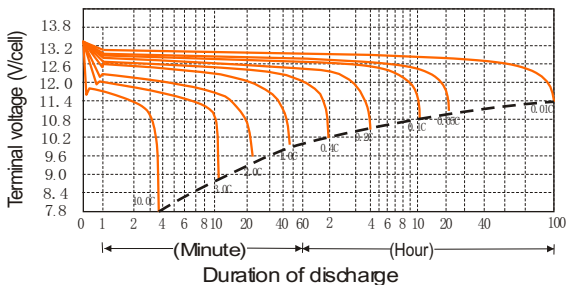
## Terminal (F5)



## Charge characteristics 77°F(25°C)



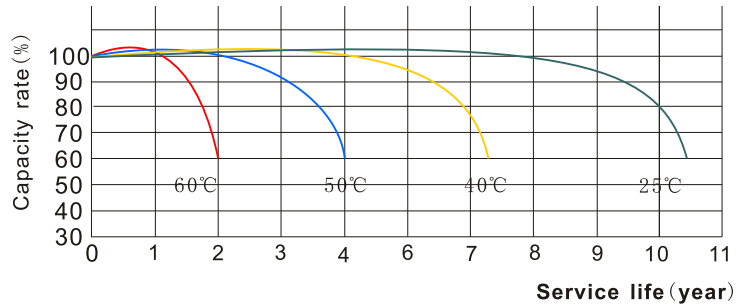
## Discharge characteristics 77°F(25°C)



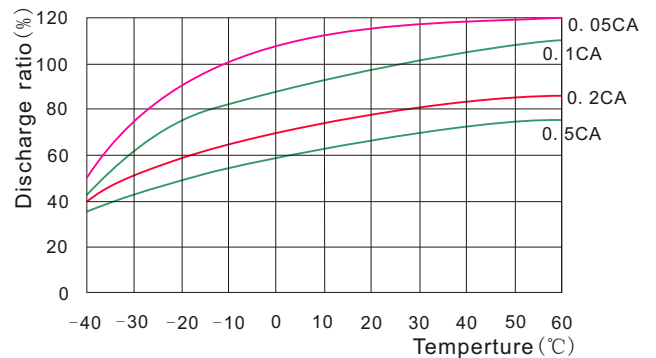
## Discharge current and final discharge voltage

Discharge current(A)	Final discharge voltage (V/cell)
0.05C or below or intermittent discharge	11.4
0.05C of current close to it	11.1
0.1C of current close to it	10.8
0.2C of current close to it	10.5
From 0.2C to 0.5C	10.2
From 0.5C to 1C	9.6
From 1C to 3C	9.0
Current in excess of 3C	7.8

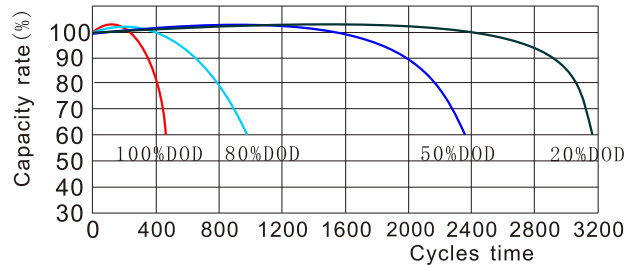
## Temperature and float service life



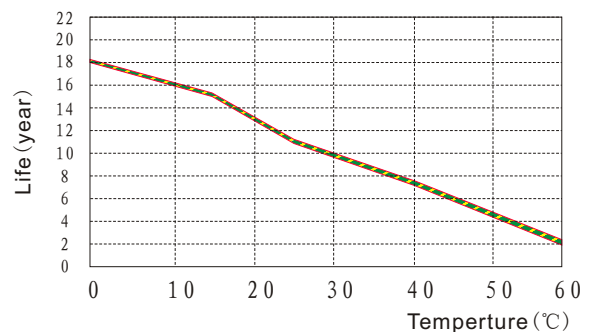
## Temperature and discharge capacity



## Cycle life curves (25°C)



## Float service life



# 6-CNFJ-28

## Constant Current Discharge Characteristics Units: Amperes (25°C, 77°F)

End voltage per cell	5min	15min	30min	45min	1h	2h	3h	4h	5h	6h	8h	10h	12h	20h	24h
1.60V	75.6	48.2	31.8	23.9	19.5	11.6	8.48	6.59	5.60	4.81	3.64	2.94	2.47	1.54	1.29
1.67V	65.1	43.7	29.4	22.6	18.9	11.1	8.06	6.52	5.32	4.76	3.58	2.88	2.47	1.54	1.29
1.70V	62.2	42.4	28.5	22.4	18.3	10.9	7.89	6.46	5.29	4.73	3.55	2.85	2.47	1.54	1.29
1.75V	56.5	39.7	27.4	21.5	17.7	10.5	7.67	6.30	5.12	4.62	3.50	2.82	2.45	1.54	1.29
1.80V	50.0	36.3	26.4	20.7	16.9	10.1	7.56	6.18	5.01	4.50	3.41	2.80	2.40	1.54	1.28
1.83V	43.6	33.2	24.3	19.2	16.0	9.74	7.28	5.93	4.78	4.34	3.30	2.71	2.33	1.53	1.25
1.85V	37.3	30.1	22.4	17.8	15.1	9.32	7.00	5.71	4.59	4.20	3.19	2.64	2.27	1.53	1.21

## Discharge Data with Constant Power Units: Watts per cell (25°C, 77°F)

End voltage per cell	5min	15min	30min	45min	1h	2h	3h	4h	5h	6h	8h	10h	12h	20h	24h
1.60V	125	84.4	57.8	44.0	36.5	22.2	16.2	12.6	10.7	9.43	7.14	5.81	4.87	3.02	2.53
1.67V	112	78.7	54.1	42.1	35.5	21.5	15.8	12.5	10.4	9.32	6.99	5.68	4.87	3.02	2.53
1.70V	108	76.7	52.6	41.7	34.5	21.0	15.2	12.4	10.2	9.26	6.97	5.62	4.87	3.02	2.53
1.75V	100	72.1	50.9	40.4	33.6	20.3	14.8	12.2	9.96	9.12	6.83	5.57	4.87	3.02	2.53
1.80V	90.7	66.4	49.1	39.1	32.3	19.6	14.6	12.0	9.71	8.98	6.72	5.51	4.73	2.99	2.52
1.83V	80.1	61.5	45.9	36.6	30.7	18.9	14.1	11.6	9.38	8.73	6.49	5.37	4.62	2.99	2.46
1.85V	69.5	56.6	42.6	34.2	29.1	18.2	13.6	11.2	9.01	8.48	6.27	5.23	4.51	2.97	2.40